



O'BRIEN STAINED GLASS CO., INC.

Rollingstone, MN and Trenton, MO
Ph. 507-689-2223, toll free 1-800-362-7436
obrienstainedglass.com



PROTECTIVE STORM COVERINGS

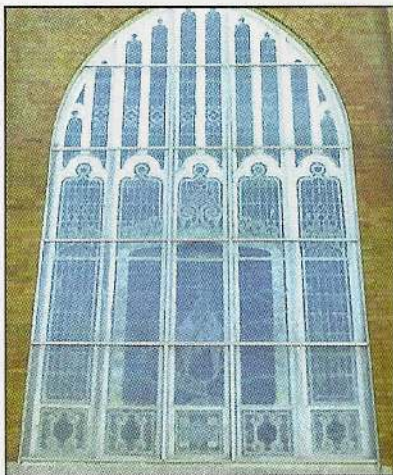
St. Mary's Catholic Church,
Sleepy Eye, MN



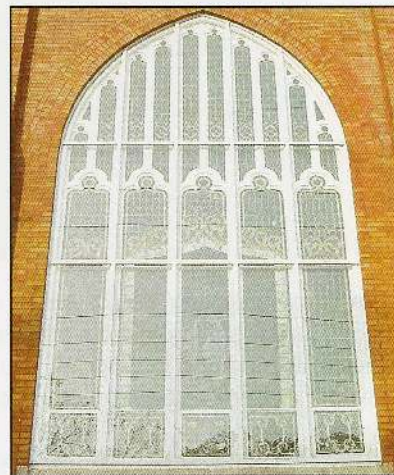
← Permanent protective storm coverings are the first line of defense in protecting stained glass windows from the ravages of time. Prestigious works of art like this beautiful rose window are protected in a handsome, secure, and efficient manner. Prevent damage by weather, accident or vandalism. Save church dollars usually spent on maintenance, heating and cooling by keeping windows up to date.

Below pictures are from work at 1st UMC, Traer, IA.

Before



After

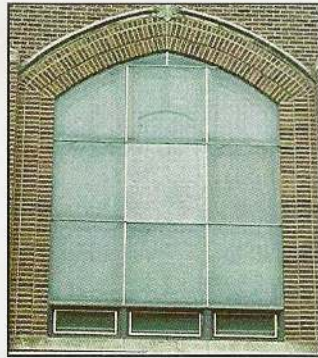


Our storm coverings feature thorough pre-installation detailing to the stained glass windows including repairs, cleaning and polishing of the stained glass. Maintenance to the wood includes repairs, prep work and painting.

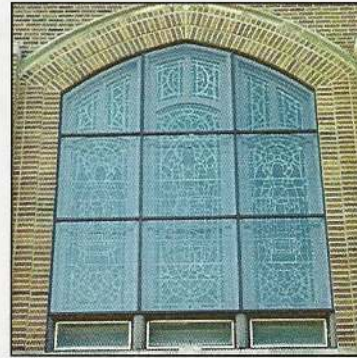
Clear 1/4" glass is the most popular trouble free covering, it can be installed in easy to service panels set in professionally installed frames available in popular colors. Venting for moisture egress is provided.

Sealed with long-life exterior silicone sealers, the storm windows are backed by a 100% two year warranty against defect in material or workmanship.

Before



After



Above - St. Theodore's of Albert Lea, MN
Below - 1st United Methodist Church of Alma Center, WI



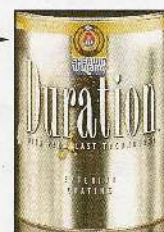
In the after pictures above you can see an example of "structural glazing" whereby the 1/4" clear storm glass is sealed directly to the brick. Using masking tape for a neat edge, the silicone caulk is liberally applied and then tooled into place with a brush. The tape is then removed. This efficient method of glass installation looks good and has proven to work well over long periods of time.

Three big advantages of this method are: #1 glass replacement is simple, #2 less aluminum means less heat transfer and condensation, #3 less aluminum lowers cost and yields a better return on investment.



Efficient window frames for opening sections...
Durable and easy to operate...

Sherwin Williams
Duration, the leader in
life-time warranties...



*"Be not the first by whom the new is tried,
Nor yet, the last to lay the old aside."*

Time to update your windows? Let us suggest some proven methods!

Many profiles of framing can be seen under church windows at www.jsussmaninc.com including, perimeter, T-bar, H-bar, and vented T-bar. Favorite painted colors of Limestone, White, and Bronze are readily available as well as anodized finishes.